



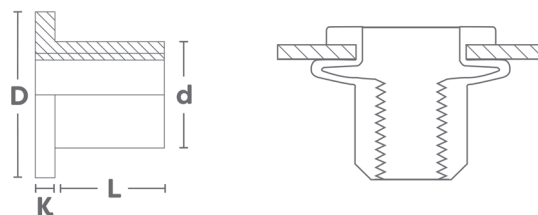
CAUCHO
E.P.D.M









Recomendado para conexiones de metal y plástico como aislante eléctrico.

Suitable for plastic and metal connections and is electrically insulating



Cabeza Ancha - Neopreno - Abierta
Flat Head - Neoprene - Open



M	Dimensiones Size	L mm.	Código Code	E mm.	nm	pcs
M3 x0,5	D= 11mm. K= 1,2mm. d= 7,9mm.  Ø 8mm.	24	01032NEFCYOB	8,5 - 15	2,5 - 5,0	1000
M4 x0,7	D= 11mm. K= 1,2mm. d= 7,9mm.  Ø 8mm.	12,6	01041NEFCYOB	0,4 - 4,0	2,5 - 4,0	1000
		24	01042NEFCYOB	8,5 - 14,0		
M5 x0,8	D= 12,7mm. K= 0,9mm. d= 9,6mm.  Ø 9,7mm.	14,1	01051NECYOB	0,4 - 4,9	3,5 - 5,0	1000
M5 x0,8	D= 14mm. K= 0,9mm. d= 9,6mm.  Ø 9,7mm.	21,5	01052NECYOB	7,9 - 11,4	3,0 - 9,0	1000
M5 x0,8	D= 14mm. K= 1,3mm. d= 9,6mm.  Ø 9,7mm.	26,5	01053NECYOB	7,9 - 15,0	3,0 - 7,0	1000
M6 x1,0	D= 16mm. K= 1,3mm. d= 12,7mm.  Ø 12,8mm.	16	01061NECYOB	0,4 - 4,0	6,0 - 10,0	1000
M6 x1,0	D= 19,05mm. K= 4,75mm. d= 12,7mm.  Ø 12,8mm.	21,1	01062NECYOB	0,8 - 4,7	8,0 - 10,0	800
M8 x1,25	D= 21,5mm. K= 3,2mm. d= 15,9mm.  Ø 16mm.	18,3	01081NECYOB	0,4 - 4,0	10,0 - 15,0	500