



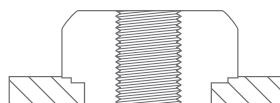
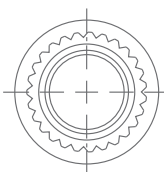
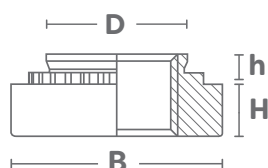
ACERO
STEEL

INOX
ST. STEEL



Tipo Type	Material Material	Acabado Finished	Usó Working
ST ST	ACERO AL CARBONO CARBON STEEL	CINCADO ZINC CLEAR	≤ 80HRB ≤ 80 HRB
A2 A2	ACERO INOX. SERIE 300 300 SERIES ST. STEEL	PASIVADO ASTM A380 PASIVATED ASTM A380	≤ 70HRB ≤ 70 HRB

ROSCA / THREAD: 6g ISO Metric



THREAD	Código Code Acero Carb. Carbon Steel Acero Inox. S300 St. Steel S300		h mm.	min mm.	min mm.	min mm.	D mm.	B mm.	H mm.	
M3 x0,5	02STM03-0	02A2M03-0	0,76	0,8						
	02STM03-1	02A2M03-1	0,97	1,0	4,25	4,8	4,22	6,3	1,55	8.000
	02STM03-2	02A2M03-2	1,37	1,4						
M4 x0,7	02STM04-0	02A2M04-0	0,76	0,8						
	02STM04-1	02A2M04-1	0,97	1,0	5,4	6,9	5,38	7,9	2,05	4.000
	02STM04-2	02A2M04-2	1,37	1,4						
M5 x0,8	02STM05-0	02A2M05-0	0,76	0,8						
	02STM05-1	02A2M05-1	0,97	1,0	6,4	7,1	6,38	8,7	2,05	4.000
	02STM05-2	02A2M05-2	1,37	1,4						
M6 x1,0	02STM06-0	02A2M06-0	1,15	1,4						
	02STM06-1	02A2M06-1	1,37	2,3	8,75	8,6	8,72	11,05	4,08	1.000
	02STM06-2	02A2M06-2	2,21	3,2						
M8 x1,25	02STM08-1	02A2M08-1	1,37	1,4						
	02STM08-2	02A2M08-2	2,21	2,3	10,5	9,7	10,44	12,65	5,5	600
M10 x1,5	02STM10-1	02A2M10-1	2,21	1,4						
	02STM10-2	02A2M10-2	3,05	2,3	14,0	13,5	13,92	17,35	7,5	250