



Materiales
Materials



ACERO
STEEL

Acero al carbono cincado
Carbon steel zinc plated



INOX
ST. STEEL

Acero Inox. Serie 300 pasivado
300 series st. steel passivated



INOX
ST. STEEL

Acero Inox Endurecido pasivado
Hardening grade st. steel passivated



Tuercas según material de instalación
Nuts according to installation material



Material Chapa
Sheet material

ACERO
STEEL

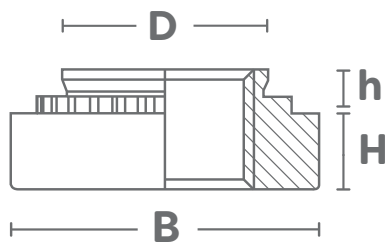
ALUMINIO
ALUMINIUM

INOX
ST. STEEL

Disponible en
Available in



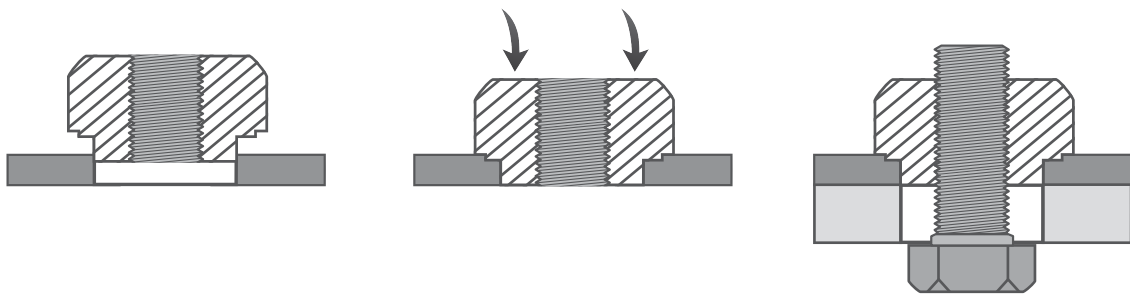
Especificaciones
Specifications




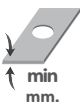


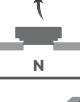

B	Diámetro del cuerpo Body diameter
D	Diámetro de instalación Installation diameter
h	Altura de inserción Insertion height
H	Altura del Cuerpo Body height



Aplicación
Aplicaton



Glosario
Glossary

 THREAD	Rosca Thread
 min mm.	Espesor mínimo de chapa Minimun grip range sheet
 mm.	Diametro del agujero Hole diameter
 min mm.	Espacio mínimo al borde Minimun space to edge
 kN	Fuerza de instalacion Installation force
 N	Resistencia a ser expulsada Resistance to expulsion
 Nm	Par de apriete Tightening torque