



Separadores de rosca ciega Blind Threaded Standoffs

ACERO
STEEL

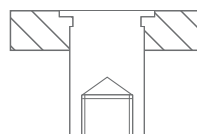
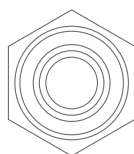
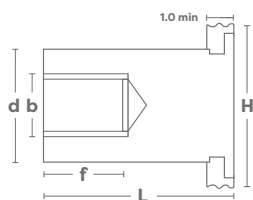
INOX
ST. STEEL

ALUMINIO
ALUMINIUM



Tipo Type	Material	Acabado Finished	Uso Working
STO	ACERO AL CARBONO CARBON STEEL	CINCADO ZINC PLATED	≤ 80 HRB ≤ 80 HRB
A2O	ACERO INOX. SERIE 303 303 STAINLESS STEEL	PASIVADO ASTM A380 PASIVATED ASTM A380	≤ 70 HRB ≤ 70 HRB
ALO	ALUMINIO 7075-T6 7075-T6 ALUMINIUM	PULIDO POLISHED	≤ 50 HRB ≤ 50 HRB

ROSCA / THREAD: 6g ISO Metric



Código Code
*xx = L

Ejemplo/Example: 04M0306STO

THREAD	Código Code			L mm.	mm.	min mm.	min. mm.	d mm.	b mm.	f mm.	H mm.	
	Acero Carb. Cinc. Carbon Steel	Acero Inox. St. Steel	Aluminio Aluminium									
M3 x0,5	04M03xxSTC	04M03xxA2C	04M03xxALC	8	4,2	6,0	1,0	4,19	3,2	4	4,8	2.000
				10						4		
				11						5		
				14-16						6,5		
				18-20-22-25						9,5		
3.5M3 x0,5	04M3503xxSTC	04M3503xxA2C	04M3503xxALC	6	5,4	7,0	1,0	5,38	3,2	3,2	6,4	1.000
				8						4		
				10						4		
				11						5		
				14-16						6,5		
18-20-22-25	9,5											
M4 x0,7	04M04xxSTC	04M04xxA2C	04M04xxALC	8-10	7,2	8,0	1,3	7,11	4,8	4	7,9	1.000
				11						5		
				14-16						6,5		
				18-20-22-25						9,5		
M5 x0,8	04M05xxSTC	04M05xxA2C	04M05xxALC	8-10	7,2	8,0	1,3	7,11	5,35	4	7,9	1.000
				11						5		
				14-16						6,5		
				18-20-22-25						9,5		