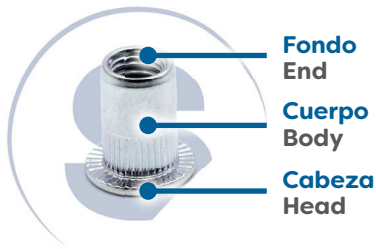




Datos Técnicos
Technical Data

Materiales
Materials



ACERO STEEL Acero Steel



INOX A2 ST. STEEL A2 Acero Inox A2 St. Steel A2



INOX A4 ST. STEEL A4 Acero Inox A4 St. Steel A4

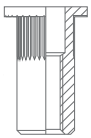


ALUMINIO ALUMINIUM Aluminio Aluminium



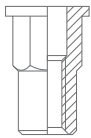
Tipos de cuerpo
Body types

Cilíndrica Ranurada
Cylindrical Knurled



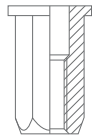
ACERO STEEL INOX A2 ST. STEEL A2 INOX A4 ST. STEEL A4 ALUMINIO ALUMINIUM

Semi Hexagonal
Semi Hexagonal



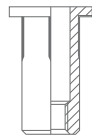
ACERO STEEL INOX A2 ST. STEEL A2

Hexagonal
Full Hexagonal



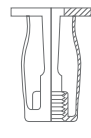
ACERO STEEL INOX A2 ST. STEEL A2

Trebol
Triform



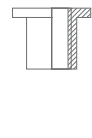
ACERO STEEL

Tuerca Plegada
Fold Nut



ACERO STEEL

Tuerca Neopreno
Neoprene Nut



NEOPRENO NEOPRENE

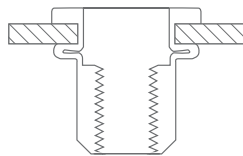
Tornillo Remachable
Rivet Studs



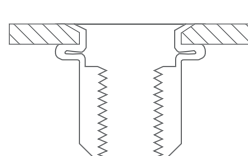
ACERO STEEL

Tipos de cabeza
Head types

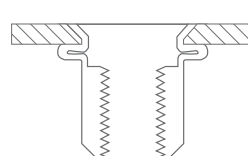
Cabeza Ancha
Flat Head



Cabeza Reducida
Reduced Head

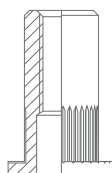


Cabeza Avellanada
Countersunk Head

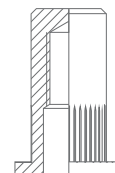


Fondo
End

Fondo Abierto
Open end

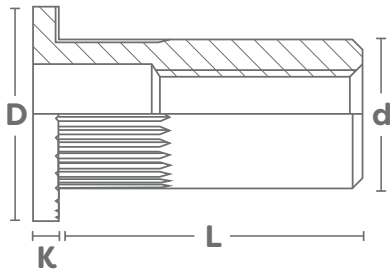


Fondo Cerrado
Closed end



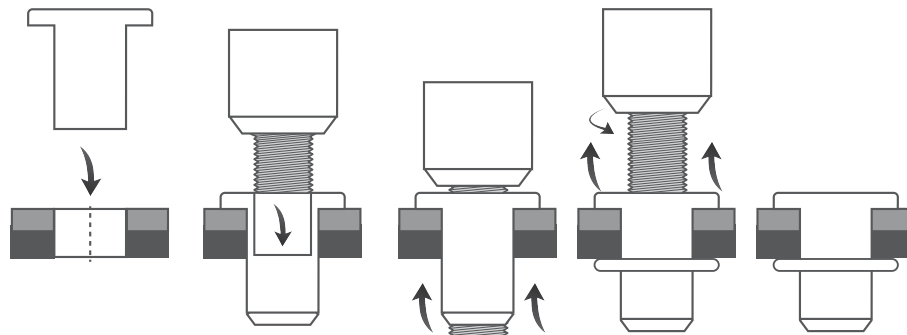


Especificaciones
Specifications



d	Diámetro del cuerpo Body diameter
D	Diámetro de la cabeza Head diameter
K	Espesor de la cabeza Head thickness
L	Longitud Length

Aplicación
Aplicaton



Glosario
Glossary

M	Metrica Metric
	Diametro de la broca Drill diameter
	Espesor a remachar Grip Range (mm)
	Tracción Tensile (N)
	Par Máximo Maximun Torque (Nm)
	Piezas por caja Pieces per box



El valor del CIZALLAMIENTO varía según la superficie, dimensión y material del tornillo.
The value of SHEAR varies depending on surface, dimension and material of screws.